



Data Sheet


 telephone  
 949 252 0522

BACK

Product Category: IF SAW Filter

 Part Number  
 820-IF146.9M-A

 Package  
 20.2 x 12.6 Thru Hole

 Application  
 Base Station & Repeater

 Last Modified  
 May 24 2003

## TYPE :

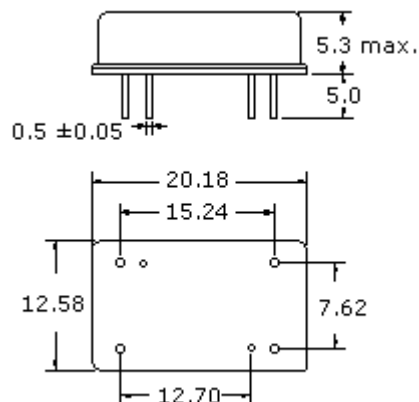
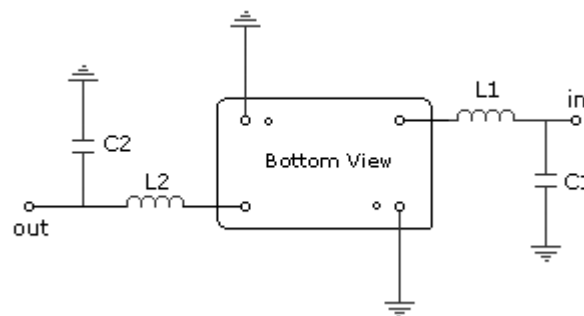
 146.9 MHz Bandpass Filter  
 3.80 MHz Bandwidth

## PART NUMBER :

**820-IF146.9M-A****OPERATING CONDITIONS / ELECTRICAL CHARACTERISTICS**

PARAMETERS	Minimum	Typical	Maximum	Units
Center Frequency	146.84	146.90	146.96	MHz
Insertion Loss	-	22.5	25.0	dB
1dB Bandwidth	3.30	3.48	-	MHz
3dB Bandwidth	3.80	3.90	-	MHz
40dB Bandwidth	-	5.75	6.00	MHz
Passband Ripple (Fo $\pm$ 1.4MHz)	-	0.40	1.0	dB
Group Delay Variation	-	60	100	nsec
Absolute Delay	-	1.33	-	$\mu$ sec
Ultimate Rejection	40	45	-	dB
Substrate Material	-	Qz	-	-

\* Custom SAW IF Filters available. Contact Oscilent for assistance.

**PACKAGE OUTLINE (mm)****TEST FIXTURE**

L1 = 68nH      C1 = 47pF  
 L2 = 56nH      C2 = 51pF  
 Source/Load Impedance = 50 ohms

Oscilent Corporation - CALL 949.252.0522

 17962 Sky Park Circle, Building D, Irvine, CA 92614, USA  
 Fax: 949.252.0599, E-Mail: Sales@Oscilent.com
**Part No.: 820-IF146.9M-A**

[Crystal Filter](#) | [Ceramic Filter](#) | [SAW Filter / SAW Devices](#) | [Site Map](#)